

JF SERIES

Electric Actuator

Model: JF-EM

Rating: AC/DC



Specifications:

- Power:
V_{AC}110 ~ 120 / 220 ~ 240 / 380 ~ 440
V_{DC}24V / V_{AC}24V
- Temperature: -20°C to 70°C
- Humidity: ≤ 90% at 25°C
- Duty Cycle: S2 Operate Time

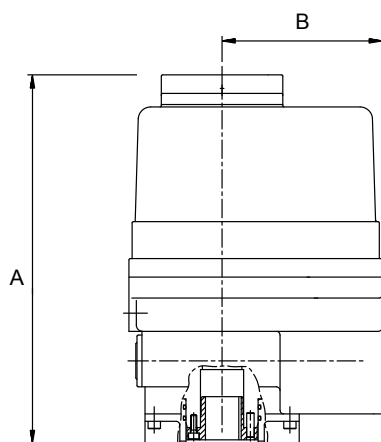
Design feature:

For tough applications, DIE ERSTE offers JF Series Electric Actuator with larger torque output compared to most brands in the market. From 35Nm to 13000Nm, JF Electric Actuator is constructed with light- weight material and still achieves compact dimensions. In the meantime, it still has IP67 protection level. The body and the cover are tightly sealed, suitable for outdoors and submersible applications.

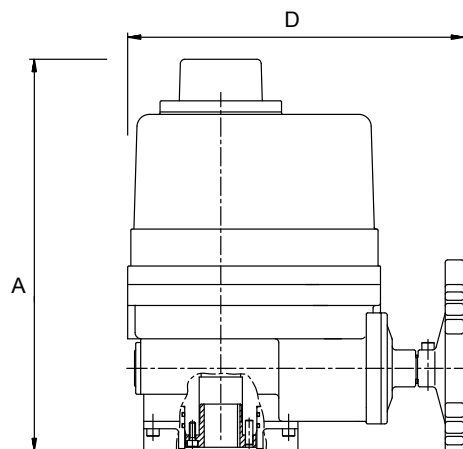
Moreover, JF Electric Actuator is equipped with planetary gear and overheating protection to shutdown automatically for motor damage prevention, to meet the longest product life-cycle period.

Not only equipped with pioneered technology, JF Electric Actuator is also convenient to use. 3D indicator provides 360° visual angle for easy identification of the valve position. The direct manual operation without clutch can prevent unexpected injury. Besides manual operation, JF Electric Actuator can be also used in remote control applications, such as DCS and PLC controls. On and off signals, and proportional control signals (4-20mA), can be sent to control panel for monitoring purpose for easy operation, to achieve easy adjustment and installation.

MODEL	Power (W)	Torque (Nm)	Operating Time (Sec)	ISO 5211	Note
	AC110V AC220V				
JF-EM1	10	35	11	F03/F05/F07	Manual Wrench Operator
JF-EMA	10	50	15	F03/F05/F07	
JF-EMB	10	80	22	F03/F05/F07	
JF-OM2	40	100	19	F05/F07	Handwheel
JF-OM3	40	200	39	F07/F10	
JF-OM4	90	400	29	F10	
JF-OM5	90	600	39	F10/F12	
JF-OM6	90	800	47	F12	
JF-OM7	120	1000	47	F12/F14	
JF-OM8	200	1700	34	F12/F14	
JF-OM9	200	2300	47	F12/F14/F16	



JF-EM1 / EMA



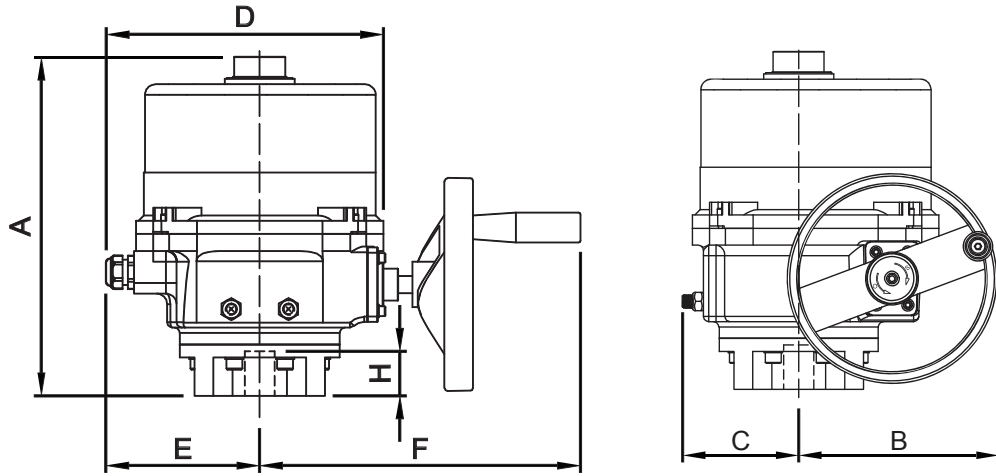
JF-EMB

Dimensions List (ON-OFF MODEL)

MODEL	A	B	D
JF-EM1	162	79	-
JF-EMA	162	79	-
JF-EMB	188	-	165

Dimensions List (PROPORTIONAL MODEL)

MODEL	A	B	D
JF-EM1	192	107	-
JF-EMA	192	107	-
JF-EMB	218	-	165



MODEL	A	B	C	D	E	F	H
JF-OM2	265	123	79	216	120	240	35
JF-OM3	265	123	79	216	120	240	35
JF-OM4	321	187	103	262	150	297	55
JF-OM5	321	187	103	262	150	297	55
JF-OM6	321	187	103	262	150	297	55
JF-OM7	321	187	103	262	150	297	55
JF-OM8	378	241	119	293	161	346	65
JF-OM9	378	241	119	293	161	346	65